

VR04

Its small size makes this an ideal cooler for places with limited space.



KEY FEATURES



ELECTRONIC TEMPERATURE CONTROLLER:
Our standard controller maintains temperature efficiently based on surrounding conditions, self adjusting to the right temperature for your products.



LOW MAINTENANCE CONDENSER:
Our models are designed with low maintenance condenser systems preventing dust from blocking air flow and thus saving energy and increasing compressor's life.



HIGH EFFICIENCY GLASS DOORS:
"Low-e" double panel argon gas filled glass-pack with an extruded insulated plastic frame, making this door the most energy efficient in its category.



LED PERIMETER LIGHTING:
LED lighting system, uses a portion of the energy of regular fluorescent lights, and need no replacement for seven years.



CYCLOPENTANE INSULATION:
CFC and HFC free Cyclopentane foam is eco-friendly and a high efficiency insulator.

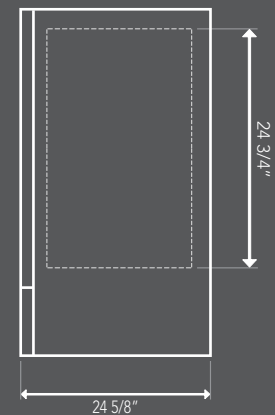
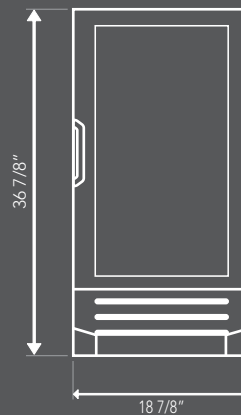
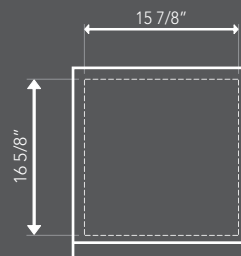


PLASTIC FRONT GRILL:
Its differentiated and modern design provides superior impact resistance and is easy to remove for condenser maintenance.

TECHNICAL SPECIFICATIONS

External dimensions	H:	36 7/8"	938 mm
	W:	18 7/8"	480 mm
	D:	24 5/8"	625 mm
Internal dimensions	H:	24 3/4"	630 mm
	W:	15 7/8"	403 mm
	D:	16 5/8"	423 mm
Weight	Gross:	96.3 lb	43.7 kg
	Crated:	98.1 lb	44.5 kg
Capacity ¹	3.9 ft ³	111.0 lts	
Trailer load	53'	202	
Doors	1		
Shelves	3		
20 oz bottle capacity	Flat shelves:	50	
	Front facing:	5	
12oz can capacity	Total:	75	

TOP VIEW



FRONT VIEW

SIDE VIEW

REFRIGERATION DATA

Energy consumption (kWh/24h)	1.208*
Refrigerant	R-134a
Compressor (hp)	1/6
Evaporator	Static
Temp. range	32°F to 44.6°F

ELECTRICAL DATA

Amps (A)	2.1*	
Voltage (V)	115	
Lighting	LEDs	
Cord length	120"	3048 mm
Plug type	NEMA 5-15P	



¹Based on ANSI/AHAM HRF-1

*Based on ANSI/ASHRAE 72-2005

Dimensions rounded up to the nearest millimeter or inch.

Specifications subject to change without notice.

Imbera USA L.L.C.
www.imbera.mx

303 Perimeter Center North Suite 300 Atlanta, GA 30346
Ph: +1 (678) 690 8454 Fax: +1 (678) 690 8455

WARRANTY

One year limited warranty on all parts and labor, an additional 4 year warranty on compressor. (USA and Canada only)