

ESTABLISHING A **NEW STANDARD** IN THE COMMERCIAL REFRIGERATION INDUSTRY.

**MINIMUM ENERGY CONSUMPTION WITH A LARGE FOOTPRINT THAT MAXIMIZES INTERNAL CAPACITY.**



## ➤ KEY FEATURES

- **BMAD Refrigeration System**

Ensures rapid and effective cabinet cool down and maintains consistent temperature range with minimum energy consumption

- **Electronic Temperature Controller**

Assures the optimal performance of the cooler, delivering product temperature ideal for consumption.

- **High Efficiency Glass Door**

Equipped with double panel glass and low-e film to reduce condensation. Door hinge is equipped with a self-closing system to ensure the door closes safely, and returns to original position, without any damages.

- **LED Lighting System**

Our LED system uses a fraction of the energy of regular fluorescent lights and requires no replacement for up seven years.

- **CFC and HFC Free Cyclopentane Foam**

Eco-friendly, recyclable and high efficiency cabinet insulation.

- **Electronic Fan Motors**

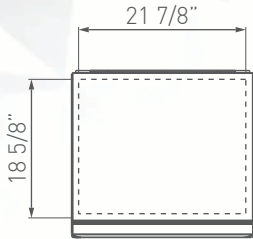
Enhances performance and efficiency. Uses only a fraction of the energy than industry standard shaded-pole motor requires. Longer lifespan fan motor.

- **Low Maintenance Condenser**

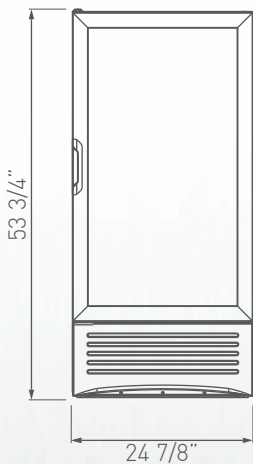
Imbera's finless condenser designed to minimize maintenance. Drastically reduces Total Cost of Ownership. Prevents dust that blocks air flow, to save energy and extend the life of the compressor.

ESTABLISHING A **NEW STANDARD** IN THE COMMERCIAL REFRIGERATION INDUSTRY.

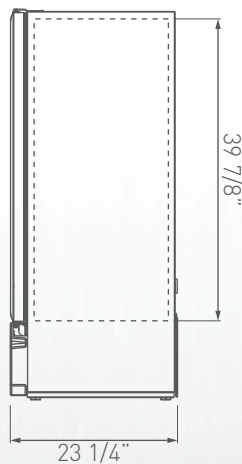
## PRODUCT VIEWS



**TOP VIEW**



**FRONT VIEW**



**SIDE VIEW**

### Warranty:

Three year limited warranty on all parts and labor, an additional two year warranty on compressor. (USA and Canada only)

Dimensions rounded up to the nearest inch or millimeter.  
Specifications subject to change without notice.

Customer Service: 866-363-0079 | [WWW.IMBERAFOODSERVICE.COM](http://WWW.IMBERAFOODSERVICE.COM)

## TECHNICAL SPECIFICATIONS

Exterior Dimensions	W:	24 7/8"	632 mm
	D:	23 1/4"	590 mm
	H:	53 3/4"	1365 mm

Interior Dimensions	W:	21 7/8"	555 mm
	D:	18 5/8"	472 mm
	H:	39 7/8"	1013 mm

Dimensions w/packaging	W:	27 1/4"	693 mm
	D:	25"	636 mm
	H:	57 5/8"	1464 mm

Shelf Size	W:	20 7/8"	530 mm
	D:	17 3/8"	440 mm

<b>Weight</b>	166.4 Lbs	75.2 kg
<b>Weight w/packaging</b>	180.1 Lbs	81.7 kg

<b>Shelves</b>	3
----------------	---

<b>Capacity 20oz.</b>	<b>Flat:</b>	126
	<b>Gravity:</b>	108

## REFRIGERATION DATA

<b>Energy Consumption</b>	1.740 kWh/day
---------------------------	---------------

<b>Voltage</b>	115/60
----------------	--------

<b>Horse Power</b>	1/8
--------------------	-----

<b>AMPS</b>	3.0
-------------	-----

## LOGISTIC

<b>Trailer Loads</b>	40':	54
	53':	80

<b>Certifications</b>	UL:	✓
	ES:	✓
	UL/EPH:	✓

\* Energy consumption based on ANSI/ASHRAE Standard 72-2005.

BMAD System (Low maintenance high performance).  
Dimensions rounded up to the nearest inch or millimeter.  
Specifications subject to change without notice.